

2021 COMMUNITY SNAPSHOT

Melbourne School of Health Sciences

ALUMNI DEMOGRAPHICS



18,209

TOTAL LIVING ALUMNI



15,113

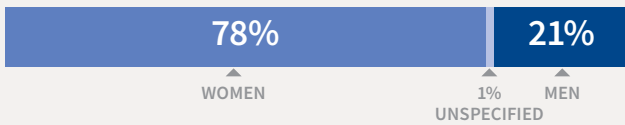
CONTACTABLE ALUMNI



10,475

CONTACTABLE BY EMAIL

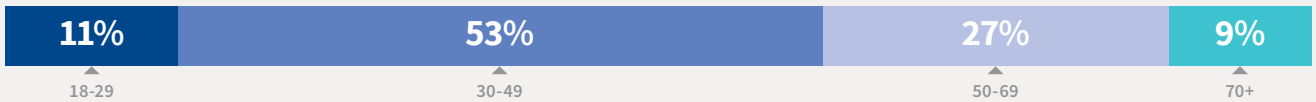
Gender



Location



Age

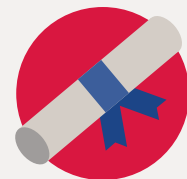


TOP 5 INTERNATIONAL LOCATIONS

	161 SINGAPORE
	98 CANADA
	80 NEW ZEALAND
	74 HONG KONG (SAR)
	70 UNITED STATES OF AMERICA

ALUMNI BY DEPARTMENT

Nursing	6,586	35%
Social Work	4,722	27%
Physiotherapy	3,366	19%
Optometry & Vision Sciences	1,773	10%
Audiology & Speech Pathology	1,623	9%



489

TOTAL PHD ALUMNI



846

NEW GRADUATES IN 2020

¹ THE BREAKDOWN BY DEPARTMENT WILL NOT SUM TO TOTAL LIVING ALUMNI AS SOME ALUMNI HAVE GRADUATED FROM MULTIPLE DEPARTMENTS.