

SHARED DECISION-MAKING TREE FOR STROKE SURVIVORS WITH MODERATE TO SEVERE DISABILITY

This decision tree will help you to work through a process of shared decision-making with stroke survivors and caregivers.
The shared decisions you need to make together are:

How will rehabilitation be delivered?
Could telerehabilitation be included in the stroke survivor's care plan?
Is telerehabilitation being offered alone or in conjunction with in-person rehabilitation?

What can be done safely and effectively during telerehabilitation vs in-person rehabilitation?
What can be done in-person before and during telerehabilitation?
What can be done via telerehabilitation, and how will this be done?
If restricted, when can in-person rehabilitation recommence?

Starting shared decision-making

Gathering information to inform shared decision-making

CHECK POINT Identify decision-making needs

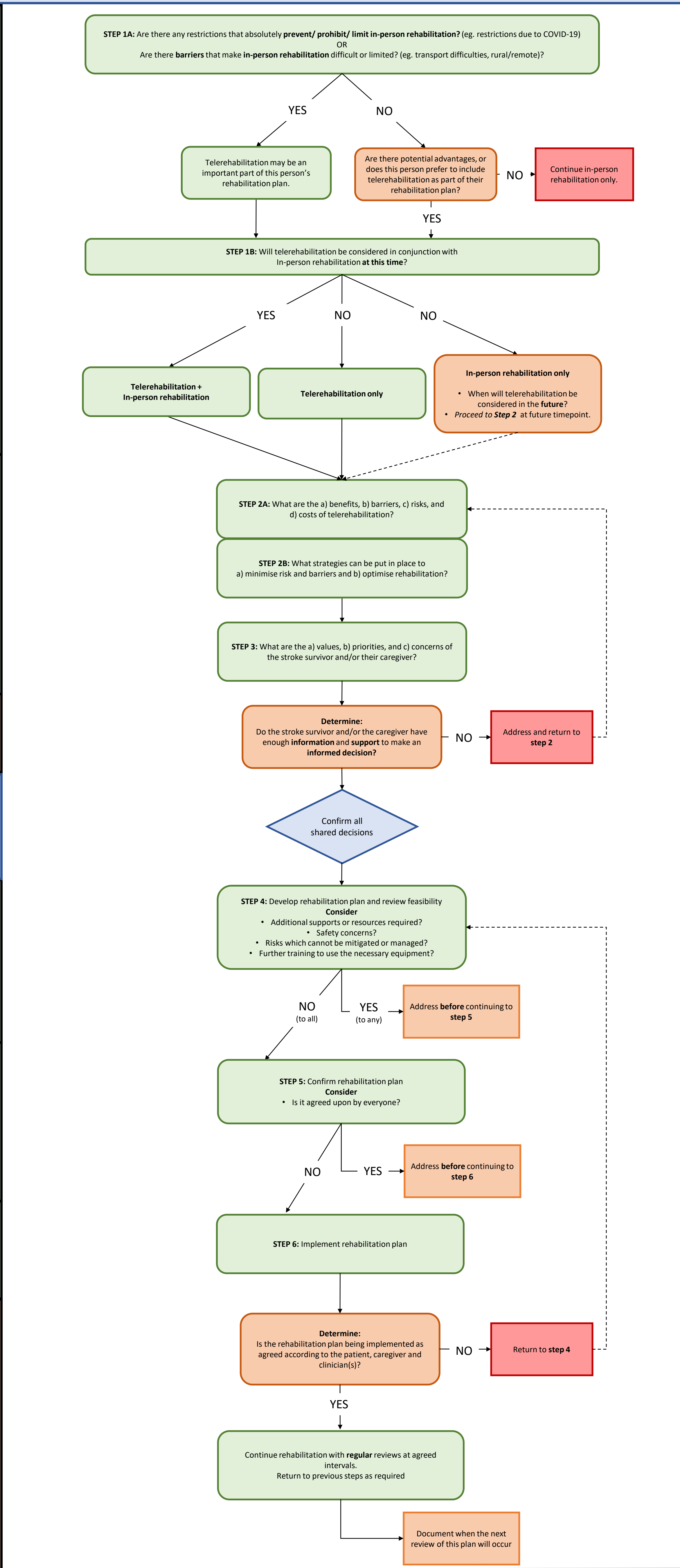
Making shared decisions about the inclusion of telerehabilitation in the plan

Developing the telerehabilitation plan

Confirming the telerehabilitation plan

Implementing the telerehabilitation plan

CHECKPOINT Reviewing the telerehabilitation plan



RESOURCES to support key steps

RESOURCES FOR STEPS 1 – 6

- Clinician
- Shared Decision-Making Guide

RESOURCE FOR STEPS 1B

- Consumer
- Decision aid: telerehabilitation information sheet for stroke survivors and caregivers

RESOURCES FOR STEPS 2 AND 3

- Clinician
- Stroke Telerehabilitation: Guide to Risk Assessments

RESOURCES FOR STEP 5

- Consumer
- SURE Test OR
- Decision Self-Efficacy Test

This decision tree is designed to be used by clinicians to support stroke survivors and their caregivers to devise a personalised telerehabilitation plan.

For more information see the attached Shared Decision-making Guide.

This Shared Decision-Making Tree was developed by C Said, E Ramage, C McDonald, N Fini, K Bower, D Hitch, E Bicknell, E Lynch, A Vogel, G McKay, K English and C English with funding from the Melbourne Disability Institute. V1 18/11/2020

